

**INDEX OF DOCUMENTS HELD ON THE PETROLEUM REGISTER FOR
ASSOCIATED ACTIVITIES LICENCE AAL 191**

1. 1 March 2013 Grant of Associated Activities Licence AAL 191.

AAL 191 is due to expire on 28 February 2014.

Interests in the licence:

Drillsearch (513) Pty Ltd 100%

2. 1 March 2013 Memorandum entering grant of licence on the public register.

3. 7 March 2013 Gazettal of grant of licence.

4. 25 February 2014 Memorandum entering notation of the following registrable dealings on the public register:

Farmin Agreement – PEL 513 dated 10 September 2013 between Drillsearch (513) Pty Ltd and Santos QNT Pty Ltd
Ref: SA 2014-13

Transfer (in relation to PEL 513) dated 10 September 2013 between Drillsearch (513) Pty Ltd and Santos QNT Pty Ltd
Ref: SA 2014-14

Interests in the licence are:

Santos QNT Pty Ltd 60%
Drillsearch (513) Pty Ltd 40%

Transfer (in relation to AAL 191) dated 10 September 2013 between Drillsearch (513) Pty Ltd and Santos QNT Pty Ltd
Ref: SA 2014-15

Interests in the licence are:

Santos QNT Pty Ltd 60%
Drillsearch (513) Pty Ltd 40%

Transfer (in relation to AAL 192) dated 10 September 2013 between Drillsearch (513) Pty Ltd and Santos QNT Pty Ltd
Ref: SA 2014-16

Interests in the licence are:

Santos QNT Pty Ltd 60%
Drillsearch (513) Pty Ltd 40%

Deed of Priority dated 10 September 2013 between Drillsearch (513) Pty Ltd, Commonwealth Bank of Australia and Santos QNT Pty Ltd
Ref: SA 2014-17

Deed of Cross Charge dated 10 September 2013 between Santos QNT Pty Ltd and Drillsearch (513) Pty Ltd
Ref: SA 2014-18

Deed of Assumption (relating to the ILUA Acceptance Contact) dated 10 September 2013 between Drillsearch (513) Pty Ltd and Santos QNT Pty Ltd
Ref: SA 2014-19

Deed of Assumption (relating to the Native Title Act Deed) dated 10 September 2013 between Drillsearch (513) Pty Ltd and Santos QNT Pty Ltd
Ref: SA 2014-20

Petroleum and Geothermal Energy Act 2000
S.115

MEMORANDUM

PETROLEUM EXPLORATION LICENCE
PEL 513

ASSOCIATED ACTIVITIES LICENCES
AALs 191 and 192

SA 2014-13 Notation of registrable dealing as evidenced by Farmin Agreement – PEL 513 dated 10 September 2013 between Drillsearch (513) Pty Ltd and Santos QNT Pty Ltd is hereby entered on the public register.

SA 2014-14 Notation of registrable dealing as evidenced by Transfer (in relation to PEL 513) dated 10 September 2013 between Drillsearch (513) Pty Ltd and Santos QNT Pty Ltd is hereby entered on the public register.

Interests in the licence are:

Santos QNT Pty Ltd	60%
Drillsearch (513) Pty Ltd	40%

SA 2014-15 Notation of registrable dealing as evidenced by Transfer (in relation to AAL 191) dated 10 September 2013 between Drillsearch (513) Pty Ltd and Santos QNT Pty Ltd is hereby entered on the public register.

Interests in the licence are:

Santos QNT Pty Ltd	60%
Drillsearch (513) Pty Ltd	40%

SA 2014-16 Notation of registrable dealing as evidenced by Transfer (in relation to AAL 192) dated 10 September 2013 between Drillsearch (513) Pty Ltd and Santos QNT Pty Ltd is hereby entered on the public register.

Interests in the licence are:

Santos QNT Pty Ltd	60%
Drillsearch (513) Pty Ltd	40%

- SA 2014-17 Notation of registrable dealing as evidenced by Deed of Priority dated 10 September 2013 between Drillsearch (513) Pty Ltd, Commonwealth Bank of Australia and Santos QNT Pty Ltd is hereby entered on the public register.
- SA 2014-18 Notation of registrable dealing as evidenced by Deed of Cross Charge dated 10 September 2013 between Santos QNT Pty Ltd and Drillsearch (513) Pty Ltd is hereby entered on the public register.
- SA 2014-19 Notation of registrable dealing as evidenced by Deed of Assumption (relating to the ILUA Acceptance Contact) dated 10 September 2013 between Drillsearch (513) Pty Ltd and Santos QNT Pty Ltd is hereby entered on the public register.
- SA 2014-20 Notation of registrable dealing as evidenced by Deed of Assumption (relating to the Native Title Act Deed) dated 10 September 2013 between Drillsearch (513) Pty Ltd and Santos QNT Pty Ltd is hereby entered on the public register.



NICK PANAGOPOULOS
A/Executive Director
Energy Resources Division
Department for Manufacturing, Innovation, Trade, Resources and Energy
Delegate of the Minister for Mineral Resources and Energy

Date: 25 February 2014

Ref: F2010/000022

PETROLEUM AND GEOTHERMAL ENERGY ACT 2000

*Grant of Associated Activities Licence—AAL 191**(Adjunct to Petroleum Exploration Licence PEL 513)*

NOTICE is hereby given that the undermentioned Associated Activities Licence has been granted under the provisions of the Petroleum and Geothermal Energy Act 2000, pursuant to delegated powers dated 21 March 2012.

No. of Licence	Licensee	Locality	Reference
AAL 191	Drillsearch (513) Pty Ltd	Cooper Basin	F2013/000016

Description of Area 1

All that part of the State of South Australia, bounded as follows:

Commencing at a point being the intersection of latitude 27°35'55"S GDA94 and longitude 139°59'00"E GDA94, thence east to longitude 140°03'00"E Clarke 1858, south to latitude 27°37'00"S Clarke 1858, west to longitude 140°02'00"E Clarke 1858, south to latitude 27°38'00"S Clarke 1858, west to longitude 140°00'00"E Clarke 1858, south to latitude 27°39'00"S Clarke 1858, west to longitude 139°59'00"E Clarke 1858, south to latitude 27°40'00"S Clarke 1858, west to longitude 139°57'00"E Clarke 1858, south to latitude 27°41'00"S Clarke 1858, west to longitude 139°55'00"E GDA94, south to latitude 27°41'00"S GDA94, west to longitude 139°54'00"E GDA94, south to latitude 27°42'00"S GDA94, west to longitude 139°53'00"E GDA94, south to latitude 27°43'00"S GDA94, west to longitude 139°52'00"E GDA94, south to latitude 27°44'00"S GDA94, west to longitude 139°51'00"E GDA94, south to latitude 27°45'00"S Clarke 1858, west to longitude 139°47'20"E GDA94, south to latitude 27°45'15"S GDA94, east to longitude 139°48'30"E GDA94, south to latitude 27°45'30"S GDA94, east to longitude 139°49'15"E GDA94, south to latitude 27°45'45"S GDA94, east to longitude 139°49'50"E GDA94, south to latitude 27°46'00"S GDA94, east to longitude 139°50'15"E GDA94, south to latitude 27°46'30"S GDA94, east to longitude 139°50'25"E GDA94, south to latitude 27°46'50"S GDA94, east to longitude 139°50'45"E GDA94, south to latitude 27°47'20"S GDA94, east to longitude 139°51'10"E GDA94, south to latitude 27°47'30"S GDA94, east to longitude 139°51'15"E GDA94, south to latitude 27°47'35"S GDA94, east to longitude 139°51'20"E GDA94, south to latitude 27°47'45"S GDA94, east to longitude 139°51'25"E GDA94, south to latitude 27°48'30"S GDA94, east to longitude 139°51'45"E GDA94, south to latitude 27°48'55"S GDA94, west to longitude 139°51'25"E GDA94, south to latitude 27°49'10"S GDA94, east to longitude 139°51'35"E GDA94, south to latitude 27°49'15"S GDA94, east to longitude 139°52'00"E GDA94, south to latitude 27°49'40"S GDA94, west to longitude 139°51'25"E GDA94, south to latitude 27°49'55"S GDA94, west to longitude 139°50'35"E GDA94, south to latitude 27°50'35"S GDA94, west to longitude 139°50'25"E GDA94, south to latitude 27°51'05"S GDA94, west to longitude 139°50'10"E GDA94, south to latitude 27°51'55"S GDA94, west to longitude 139°49'30"E GDA94, south to latitude 27°55'50"S AGD66, east to longitude 139°50'10"E AGD66, south to latitude 27°57'40"S AGD66, west to longitude 139°50'00"E AGD66, south to latitude 27°58'00"S AGD66, west to longitude 139°49'00"E AGD66, north to latitude 27°57'40"S AGD66, west to longitude 139°48'40"E AGD66, north to latitude 27°57'30"S AGD66, west to longitude 139°48'30"E AGD66, north to latitude 27°57'10"S AGD66, west to longitude 139°48'20"E AGD66, north to latitude 27°56'20"S AGD66, east to longitude 139°48'30"E AGD66, north to latitude 27°55'50"S GDA94, west to longitude 139°48'30"E GDA94, north to latitude 27°55'45"S GDA94, west to longitude 139°48'10"E GDA94, north to latitude 27°54'15"S GDA94, west to longitude 139°47'25"E GDA94, south to latitude 27°54'35"S GDA94, west to longitude 139°47'20"E GDA94, south to latitude 27°54'40"S GDA94, west to longitude 139°47'00"E GDA94, south to latitude 27°55'55"S GDA94, east to longitude 139°47'15"E GDA94, north to latitude 27°55'40"S GDA94, east to longitude 139°47'50"E GDA94, south to latitude 27°56'10"S GDA94, west to longitude 139°47'45"E GDA94, south to latitude 27°56'30"S GDA94, west to longitude 139°47'30"E GDA94, south to latitude 27°56'50"S GDA94, west to longitude 139°47'00"E GDA94, south to latitude 27°58'00"S GDA94, east to longitude 139°47'10"E GDA94, south to latitude 27°58'25"S GDA94, west to longitude 139°46'00"E GDA94, south to latitude 27°58'50"S GDA94, east to longitude 139°46'15"E GDA94, south to latitude 27°59'40"S AGD66, east to longitude 139°46'40"E AGD66, south to latitude 27°59'50"S AGD66, east to longitude 139°47'30"E AGD66, south to latitude 28°00'00"S AGD66, east to longitude 139°47'40"E AGD66, south to latitude 28°00'20"S AGD66, east to longitude 139°47'50"E AGD66, south to latitude 28°00'30"S AGD66, east to longitude 139°48'40"E GDA94, south to latitude 28°00'35"S GDA94, east to longitude 139°49'05"E GDA94, south to latitude 28°01'05"S GDA94, west to longitude 139°48'50"E GDA94, south to latitude 28°01'30"S GDA94, west to longitude 139°47'50"E GDA94, south to latitude 28°01'55"S GDA94, west to longitude 139°46'35"E GDA94, south to latitude 28°02'20"S GDA94, west to longitude 139°46'20"E GDA94, south to latitude 28°03'05"S GDA94, east to longitude 139°46'45"E GDA94, south to latitude 28°03'20"S GDA94, east to longitude 139°46'55"E GDA94, south to latitude 28°03'30"S GDA94, east to longitude 139°47'05"E GDA94, south to latitude 28°03'50"S GDA94, east to longitude 139°47'15"E GDA94, south to latitude 28°05'00"S AGD66, east to longitude 139°54'10"E AGD66, north to latitude 28°04'20"S AGD66, east to longitude 139°54'20"E AGD66, north to latitude 28°04'00"S AGD66, east to longitude 28°02'00"S Clarke 1858, east to longitude 139°56'00"E Clarke 1858, north to latitude 28°00'00"S Clarke 1858, east to longitude 139°57'00"E Clarke 1858, north to latitude 27°59'00"S Clarke 1858, east to longitude 139°58'00"E Clarke 1858, north to latitude 27°57'00"S AGD66, west to longitude 139°51'20"E AGD66, north to latitude 27°52'20"S AGD66, east to longitude 139°52'10"E AGD66, north to latitude 27°51'50"S AGD66, east to longitude 139°52'30"E AGD66, north to latitude 27°50'50"S AGD66, east to longitude 139°53'00"E AGD66, north to latitude 27°50'00"S AGD66, east to longitude 139°53'10"E AGD66, north to latitude 27°49'30"S AGD66, east to longitude 139°54'30"E AGD66, south to latitude 27°50'20"S AGD66, east to longitude 139°55'30"E GDA94, south to latitude 27°54'15"S GDA94, east to longitude 140°01'10"E AGD66, south to latitude 27°55'00"S Clarke 1858, east to longitude 140°01'35"E GDA94, south to latitude 28°03'45"S GDA94, east to longitude 140°04'55"E GDA94, south to latitude 28°06'40"S GDA94, west to longitude 140°04'25"E GDA94, south to latitude 28°07'25"S GDA94, west to longitude 140°04'00"E Clarke 1858, north to latitude 28°07'00"S Clarke 1858, west to longitude 140°02'00"E Clarke 1858, north to latitude 28°06'00"E Clarke 1858, west to longitude 139°54'50"E AGD66, south to latitude 28°06'30"S AGD66, west to longitude 139°54'25"E AGD66, south to latitude 28°08'10"S AGD66, west to longitude 139°54'20"E AGD66, south to latitude 28°08'05"S GDA94, west to longitude 139°53'30"E GDA94, north to latitude 28°07'05"S GDA94, west to longitude 139°43'15"E GDA94, north to latitude 27°58'45"S GDA94, east to longitude 139°44'00"E GDA94, north to latitude 27°56'25"S GDA94, east to longitude 139°44'35"E GDA94, north to latitude 27°52'15"S GDA94, east to longitude 139°47'00"E GDA94, north to latitude 27°50'10"S GDA94, east to longitude 139°48'00"E GDA94, north to latitude 27°47'15"S GDA94, west to longitude 139°47'20"E AGD66, north to latitude 27°47'00"S AGD66, west to longitude 139°47'10"E AGD66, north to latitude 27°46'50"S AGD66, west to longitude 139°46'30"E AGD66, north to latitude 27°46'40"S AGD66, west to longitude 139°46'20"E AGD66, north to latitude 27°46'30"S AGD66, west to longitude 139°45'40"E AGD66, south to latitude 27°46'50"S AGD66, west to longitude 139°45'30"E AGD66, south to latitude 27°47'15"S GDA94, west to longitude 139°45'15"E GDA94, north to latitude 27°45'00"S Clarke 1858, east to longitude 139°46'00"E GDA94, north to latitude 27°44'00"S GDA94, east to longitude 139°48'00"E GDA94, north to latitude 27°43'05"S GDA94, east to longitude 139°48'55"E GDA94, north to latitude 27°42'30"S GDA94, east to longitude 139°49'55"E

GDA94, north to latitude 27°41'40"S GDA94, east to longitude 139°51'00"E GDA94, north to latitude 27°40'55"S GDA94, east to longitude 139°52'00"E GDA94, north to latitude 27°40'00"S GDA94, east to longitude 139°52'55"E GDA94, north to latitude 27°39'00"S GDA94, east to longitude 139°55'10"E GDA94, north to latitude 27°38'00"S GDA94, east to longitude 139°56'50"E GDA94, north to latitude 27°37'10"S GDA94, east to longitude 139°58'10"E GDA94, north to latitude 27°36'25"S GDA94, east to longitude 139°59'00"E GDA94 and north to the point of commencement.

Description of Area 2

Commencing at a point being the intersection of latitude 27°47'00"S GDA94 and longitude 139°46'45"E GDA94, thence east to longitude 139°46'50"E GDA94, south to latitude 27°47'05"S GDA94, east to longitude 139°46'55"E GDA94, south to latitude 27°47'13"S GDA94, east to longitude 139°47'00"E GDA94, south to latitude 27°47'15"S GDA94, west to longitude 139°46'35"E GDA94, north to latitude 27°47'10"S GDA94, east to longitude 139°46'40"E GDA94, north to latitude 27°47'05"S GDA94, east to longitude 139°46'45"E GDA94 and north to the point of commencement.

Description of Area 3

Commencing at a point being the intersection of latitude 27°35'55"S GDA94 and longitude 140°06'00"E Clarke 1858, thence east to the southern boundary of the Innamincka Regional Reserve, then south-easterly along the boundary of the said Reserve to longitude 140°08'05"E GDA94, south to latitude 27°39'25"S GDA94, west to longitude 140°06'20"E GDA94, south to latitude 27°42'50"S GDA94, west to longitude 140°05'25"E GDA94, south to latitude 27°44'25"S GDA94, west to longitude 140°01'00"E AGD66, north to latitude 27°43'15"S AGD66, east to longitude 140°03'00"E Clarke 1858, north to latitude 27°43'00"S Clarke 1858, east to longitude 140°04'00"E Clarke 1858, north to latitude 27°42'10"S GDA94, west to longitude 140°03'15"E GDA94, south to latitude 27°42'30"S GDA94, west to longitude 140°01'55"E GDA94, north to latitude 27°41'00"S GDA94, east to longitude 140°02'40"E GDA94, north to latitude 27°40'00"S Clarke 1858, east to longitude 140°04'45"E AGD66, north to latitude 27°39'50"S AGD66, west to longitude 140°04'00"E AGD66, north to latitude 27°39'05"S AGD66, east to longitude 140°04'08"E AGD66, north to latitude 27°38'50"S AGD66, east to longitude 140°04'20"E AGD66, north to latitude 27°38'35"S AGD66, east to longitude 140°05'00"E Clarke 1858, north to latitude 27°38'00"S Clarke 1858, east to longitude 140°06'00"E Clarke 1858 and north to the point of commencement.

Description of Area 4

Commencing at a point being the intersection of latitude 27°42'00"S GDA94 and longitude 139°57'00"E GDA94, thence east to longitude 139°58'00"E GDA94, south to latitude 27°43'20"S AGD66, east to longitude 139°58'30"E AGD66, south to latitude 27°43'30"S AGD66, east to longitude 139°59'20"E AGD66, south to latitude 27°43'50"S AGD66, east to longitude 139°59'40"E AGD66, south to latitude 27°44'25"S GDA94, west to longitude 139°58'30"E GDA94, south to latitude 27°45'05"S GDA94, west to longitude 139°57'30"E GDA94, south to latitude 27°45'40"S GDA94, west to longitude 139°56'55"E GDA94, south to latitude 27°46'00"S AGD66, west to longitude 139°56'30"E AGD66, south to latitude 27°46'10"S GDA94, west to longitude 139°55'30"E AGD66, north to latitude 27°46'10"S AGD66, west to longitude 139°54'50"E AGD66, south to latitude 27°46'20"S AGD66, west to longitude 139°53'50"E AGD66, north to latitude 27°45'10"S AGD66, east to longitude 139°54'00"E AGD66, north to latitude 27°45'00"S Clarke 1858, east to longitude 139°54'10"E AGD66, north to latitude 27°44'40"S AGD66, east to longitude 139°54'20"E AGD66, north to latitude 27°44'30"S AGD66, east to longitude 139°55'20"E AGD66, north to latitude 27°44'20"S AGD66, east to longitude 139°55'50"E AGD66, south to latitude 27°44'30"S AGD66, east to longitude 139°56'10"E AGD66, north to latitude 27°43'30"S AGD66, east to longitude 139°56'50"E AGD66, north to latitude 27°43'20"S AGD66, east to longitude 139°57'00"E GDA94 and north to the point of commencement.

Description of Area 5

Commencing at a point being the intersection of latitude 27°46'15"S GDA94 and longitude 139°55'05"E GDA94, thence east to longitude 139°55'30"E GDA94, south to latitude 27°47'15"S GDA94, west to longitude 139°55'25"E GDA94, north to latitude 27°47'10"S GDA94, west to longitude 139°55'20"E GDA94, south to latitude 27°47'15"S GDA94, west to longitude 139°55'00"E GDA94, north to latitude 27°47'10"S GDA94, west to longitude 139°54'50"E GDA94, south to latitude 27°47'15"S GDA94, west to longitude 139°54'45"E GDA94, south to latitude 27°47'25"S GDA94, west to longitude 139°54'25"E GDA94, south to latitude 27°47'30"S GDA94, west to longitude 139°54'05"E GDA94, north to latitude 27°47'25"S GDA94, west to longitude 139°53'55"E GDA94, north to latitude 27°47'20"S GDA94, west to longitude 139°53'40"E GDA94, north to latitude 27°47'15"S GDA94, west to longitude 139°53'35"E GDA94, north to latitude 27°47'05"S GDA94, east to longitude 139°53'40"E GDA94, north to latitude 27°47'00"S GDA94, east to longitude 139°53'50"E GDA94, north to latitude 27°46'55"S GDA94, east to longitude 139°54'15"E GDA94, south to latitude 27°47'00"S GDA94, east to longitude 139°54'25"E GDA94, south to latitude 27°47'05"S GDA94, east to longitude 139°54'40"E GDA94, north to latitude 27°47'00"S GDA94, east to longitude 139°54'50"E GDA94, north to latitude 27°46'55"S GDA94, east to longitude 139°54'55"E GDA94, north to latitude 27°46'35"S GDA94, east to longitude 139°55'00"E GDA94, north to latitude 27°46'25"S GDA94, east to longitude 139°55'05"E GDA94 and north to the point of commencement.

Description of Area 6

Commencing at a point being the intersection of latitude 27°47'45"S GDA94 and longitude 139°55'20"E GDA94, thence east to longitude 139°55'30"E GDA94, south to latitude 27°48'00"S GDA94, west to longitude 139°55'20"E GDA94 and north to the point of commencement.

Description of Area 7

Commencing at a point being the intersection of latitude 27°47'40"S AGD66 and longitude 139°53'30"E AGD66, thence east to longitude 139°54'00"E AGD66, south to latitude 27°47'45"S AGD66, east to longitude 139°54'05"E AGD66, south to latitude 27°47'50"S AGD66, east to longitude 139°54'10"E AGD66, south to latitude 27°48'00"S AGD66, east to longitude 139°54'15"E AGD66, south to latitude 27°48'05"S AGD66, east to longitude 139°54'20"E AGD66, south to latitude 27°48'50"S AGD66, west to longitude 139°53'50"E AGD66, north to latitude 27°48'40"S AGD66, west to longitude 139°53'30"E AGD66, north to latitude 27°48'30"S AGD66, west to longitude 139°53'20"E AGD66, north to latitude 27°48'25"S AGD66, west to longitude 139°53'10"E AGD66, north to latitude 27°48'00"S AGD66, east to longitude 139°53'20"E AGD66, north to latitude 27°47'50"S AGD66, east to longitude 139°53'30"E AGD66 and north to the point of commencement.

Description of Area 8

Commencing at a point being the intersection of latitude 28°07'30"S AGD66 and longitude 140°01'10"E AGD66, thence east to longitude 140°02'30"E AGD66, south to latitude 28°08'25"S GDA94, west to longitude 140°02'20"E GDA94, south to latitude 28°09'00"S AGD66, west to longitude 140°01'10"E AGD66, north to latitude 28°08'50"S AGD66, west to longitude 140°01'00"E AGD66, north to latitude 28°08'30"S AGD66, west to longitude 140°00'50"E AGD66, north to latitude 28°07'50"S AGD66, east to longitude 140°01'00"E AGD66, north to latitude 28°07'40"S AGD66, east to longitude 140°01'10"E AGD66 and north to the point of commencement.

Description of Area 9

Commencing at a point being the intersection of latitude 28°08'20"S AGD66 and longitude 139°58'45"E AGD66, thence east to longitude 139°59'50"E AGD66, south to latitude 28°10'05"S GDA94, west to longitude 139°57'10"E AGD66, north to latitude 28°08'40"S GDA94, east to longitude 139°58'00"E GDA94, north to latitude 28°08'25"S GDA94, east to longitude 139°58'45"E AGD66 and north to the point of commencement.

Area: 897 km² approximately.

Dated 1 March 2013.

B. A. GOLDSTEIN,
Executive Director,
Energy Resources Division,
Department for Manufacturing, Innovation, Trade, Resources and Energy
Delegate of the Minister for Mineral Resources and Energy

PETROLEUM AND GEOTHERMAL ENERGY ACT 2000

Surrender of Petroleum Exploration Licence—PEL 132

NOTICE is hereby given that I have accepted surrender of the abovementioned Petroleum Exploration Licence under the provisions of the Petroleum and Geothermal Energy Act 2000, pursuant to delegated powers dated 21 March 2012.

No. of Licence	Licensee	Locality	Date of Surrender	Reference
PEL 132	President Petroleum Pty Ltd	Arrowie Basin, South Australia	20 February 2013	F2012/804

Description of Area—PEL 132

All that part of the State of South Australia, bounded as follows:

Commencing at a point being the intersection of latitude 30°00'00"S GDA94 and longitude 139°30'00"E GDA94, thence east to longitude 140°00'00"E GDA94, south to latitude 31°25'00"S GDA94, west to longitude 139°25'00"E GDA94, south to latitude 31°30'00"S GDA94, west to longitude 139°15'00"E GDA94, north to latitude 30°45'00"S GDA94, east to longitude 139°20'00"E GDA94, north to a southern boundary of the Gammon Ranges National Park, thence generally south-easterly, north-easterly and north-westerly along the boundary of the said National Park to longitude 139°20'00"E GDA94, north to latitude 30°30'00"S GDA94, east to longitude 139°25'00"E GDA94, north to latitude 30°25'00"S GDA94, east to longitude 139°30'00"E GDA94 and north to the point of commencement.

Area: 9 718 km² approximately.

Dated 26 February 2013.

B. A. GOLDSTEIN,
Executive Director,
Energy Resources Division,
Department for Manufacturing, Innovation, Trade, Resources and Energy
Delegate of the Minister for Mineral Resources and Energy

Petroleum and Geothermal Energy Act 2000
S.115

MEMORANDUM

ASSOCIATED ACTIVITIES LICENCE
AAL 191

1. This Licence granted on 1 March 2013 is hereby entered on the public register.
2. Interests in the licence are:-

Drillsearch (513) Pty Ltd

100%



BARRY A. GOLDSTEIN
Executive Director
Energy Resources Division
Department for Manufacturing, Innovation, Trade, Resources and Energy
Delegate of the Minister for Mineral Resources and Energy

Date: 1 March 2013

File: F2013/000016

Petroleum and Geothermal Energy Act 2000

ASSOCIATED ACTIVITIES LICENCE

AAL 191

I, BARRY ALAN GOLDSTEIN, Executive Director, Energy Resources Division, Department for Manufacturing, Innovation, Trade, Resources and Energy, in the State of South Australia, pursuant to the provisions of the *Petroleum and Geothermal Energy Act 2000* and all other enabling powers, for and on behalf of Tom Koutsantonis, Minister for Mineral Resources and Energy (Minister), pursuant to delegated powers dated 21 March 2012, HEREBY GRANT to:

Drillsearch (513) Pty Ltd
ACN 159 824 218

(hereinafter referred to as the Licensee) an Associated Activities Licence as an adjunct to Petroleum Exploration Licence PEL 513 in respect of the area set out below, to have effect from *1 March 2013* and to expire on *28 February 2014* and carrying the right of renewal subject to the provisions of the *Petroleum and Geothermal Energy Act 2000*.

BAG 1/3/13

DESCRIPTION OF AREA

The land comprised in this licence is that part of the State of South Australia described in the Schedule hereto.

CONDITIONS

1. During the term of the licence, the Licensee may carry out or cause to be carried out, the 2013 Munathiri Infill 3D seismic survey within the area as defined in the Schedule hereto.
2. The Licensee must:
 - (a) upon commencement of regulated activities under this licence, maintain in force during the term of this licence public liability insurance to cover regulated activities under this licence (including sudden and accidental pollution) in the name of the Licensees for a sum not less than twenty million dollars (\$20,000,000.00) or such greater sum as specified by the Minister, and make such amendments to the terms and conditions of the insurance as the Minister may from time to time require;
 - (b) upon request by the Minister, provide the Minister with a cover note or certificate of currency of the insurance policy referred to in paragraph (a).

3. The Minister in specifying the levels of insurance accepts no liability for the completeness of their listing, the adequacy of the sum insured, the limit of liability, the scoped coverage, or the conditions or exclusions of these insurances in respect to how they may or may not respond to any loss, damage or liability.


Date:.....1.....March.....2013



.....
BARRY A. GOLDSTEIN
Executive Director
Energy Resources Division
Department for Manufacturing, Innovation, Trade, Resources and Energy
Delegate of the Minister for Mineral Resources and Energy

Signed by the said LICENSEE

.....
Name (print)


.....
Signature
John S Whaley
Chief Operations Officer
.....

Position

.....
Date

THE SCHEDULE
ASSOCIATED ACTIVITIES LICENCE
AAL 191

Description of Area

All that part of the State of South Australia, bounded as follows:

Area 1

Commencing at a point being the intersection of latitude 27°35'55"S GDA94 and longitude 139°59'00"E GDA94, thence east to longitude 140°03'00"E Clarke 1858, south to latitude 27°37'00"S Clarke 1858, west to longitude 140°02'00"E Clarke 1858, south to latitude 27°38'00"S Clarke 1858, west to longitude 140°00'00"E Clarke 1858, south to latitude 27°39'00"S Clarke 1858, west to longitude 139°59'00"E Clarke 1858, south to latitude 27°40'00"S Clarke 1858, west to longitude 139°57'00"E Clarke 1858, south to latitude 27°41'00"S Clarke 1858, west to longitude 139°55'00"E GDA94, south to latitude 27°41'00"S GDA94, west to longitude 139°54'00"E GDA94, south to latitude 27°42'00"S GDA94, west to longitude 139°53'00"E GDA94, south to latitude 27°43'00"S GDA94, west to longitude 139°52'00"E GDA94, south to latitude 27°44'00"S GDA94, west to longitude 139°51'00"E GDA94, south to latitude 27°45'00"S Clarke 1858, west to longitude 139°47'20"E GDA94, south to latitude 27°45'15"S GDA94, east to longitude 139°48'30"E GDA94, south to latitude 27°45'30"S GDA94, east to longitude 139°49'15"E GDA94, south to latitude 27°45'45"S GDA94, east to longitude 139°49'50"E GDA94, south to latitude 27°46'00"S GDA94, east to longitude 139°50'15"E GDA94, south to latitude 27°46'30"S GDA94, east to longitude 139°50'25"E GDA94, south to latitude 27°46'50"S GDA94, east to longitude 139°50'45"E GDA94, south to latitude 27°47'20"S GDA94, east to longitude 139°51'10"E GDA94, south to latitude 27°47'30"S GDA94, east to longitude 139°51'15"E GDA94, south to latitude 27°47'35"S GDA94, east to longitude 139°51'20"E GDA94, south to latitude 27°47'45"S GDA94, east to longitude 139°51'25"E GDA94, south to latitude 27°48'30"S GDA94, east to longitude 139°51'45"E GDA94, south to latitude 27°48'55"S GDA94, west to longitude 139°51'25"E GDA94, south to latitude 27°49'10"S GDA94, east to longitude 139°51'35"E GDA94, south to latitude 27°49'15"S GDA94, east to longitude 139°52'00"E GDA94, south to latitude 27°49'40"S GDA94, west to longitude 139°51'25"E GDA94, south to latitude 27°49'55"S GDA94, west to longitude 139°50'35"E GDA94, south to latitude 27°50'35"S GDA94, west to longitude 139°50'25"E GDA94, south to latitude 27°51'05"S GDA94, west to longitude 139°50'10"E GDA94, south to latitude 27°51'55"S GDA94, west to longitude 139°49'30"E GDA94, south to latitude 27°55'50"S AGD66, east to longitude 139°50'10"E AGD66, south to latitude 27°57'40"S AGD66, west to longitude 139°50'00"E AGD66, south to latitude 27°58'00"S AGD66, west to longitude 139°49'00"E AGD66, north to latitude 27°57'40"S AGD66, west to longitude 139°48'40"E AGD66, north to latitude 27°57'30"S AGD66, west to longitude 139°48'30"E AGD66, north to latitude 27°57'10"S AGD66, west to longitude 139°48'20"E AGD66, north to latitude 27°56'20"S AGD66, east to longitude 139°48'30"E AGD66, north to latitude 27°55'50"S GDA94, west to longitude 139°48'30"E GDA94, north to latitude 27°55'45"S GDA94, west to longitude 139°48'10"E GDA94, north to latitude 27°54'15"S GDA94, west to longitude 139°47'25"E GDA94, south to latitude 27°54'35"S GDA94, west to longitude 139°47'20"E GDA94, south to latitude 27°54'40"S GDA94, west to longitude 139°47'00"E GDA94, south to latitude 27°55'55"S GDA94, east to longitude 139°47'15"E GDA94,

north to latitude 27°55'40"S GDA94, east to longitude 139°47'50"E GDA94,
south to latitude 27°56'10"S GDA94, west to longitude 139°47'45"E GDA94,
south to latitude 27°56'30"S GDA94, west to longitude 139°47'30"E GDA94,
south to latitude 27°56'50"S GDA94, west to longitude 139°47'00"E GDA94,
south to latitude 27°58'00"S GDA94, east to longitude 139°47'10"E GDA94,
south to latitude 27°58'25"S GDA94, west to longitude 139°46'00"E GDA94,
south to latitude 27°58'50"S GDA94, east to longitude 139°46'15"E GDA94,
south to latitude 27°59'40"S AGD66, east to longitude 139°46'40"E AGD66,
south to latitude 27°59'50"S AGD66, east to longitude 139°47'30"E AGD66,
south to latitude 28°00'00"S AGD66, east to longitude 139°47'40"E AGD66,
south to latitude 28°00'20"S AGD66, east to longitude 139°47'50"E AGD66,
south to latitude 28°00'30"S AGD66, east to longitude 139°48'40"E GDA94,
south to latitude 28°00'35"S GDA94, east to longitude 139°49'05"E GDA94,
south to latitude 28°01'05"S GDA94, west to longitude 139°48'50"E GDA94,
south to latitude 28°01'30"S GDA94, west to longitude 139°47'50"E GDA94,
south to latitude 28°01'55"S GDA94, west to longitude 139°46'35"E GDA94,
south to latitude 28°02'20"S GDA94, west to longitude 139°46'20"E GDA94,
south to latitude 28°03'05"S GDA94, east to longitude 139°46'45"E GDA94,
south to latitude 28°03'20"S GDA94, east to longitude 139°46'55"E GDA94,
south to latitude 28°03'30"S GDA94, east to longitude 139°47'05"E GDA94,
south to latitude 28°03'50"S GDA94, east to longitude 139°47'15"E GDA94,
south to latitude 28°05'00"S AGD66, east to longitude 139°54'10"E AGD66,
north to latitude 28°04'20"S AGD66, east to longitude 139°54'20"E AGD66,
north to latitude 28°04'00"S AGD66, east to longitude 139°54'30"E AGD66,
north to latitude 28°03'50"S AGD66, east to longitude 139°55'00"E Clarke 1858,
north to latitude 28°02'00"S Clarke 1858, east to longitude 139°56'00"E Clarke 1858,
north to latitude 28°00'00"S Clarke 1858, east to longitude 139°57'00"E Clarke 1858,
north to latitude 27°59'00"S Clarke 1858, east to longitude 139°58'00"E Clarke 1858,
north to latitude 27°57'00"S AGD66, west to longitude 139°51'20"E AGD66,
north to latitude 27°52'20"S AGD66, east to longitude 139°52'10"E AGD66,
north to latitude 27°51'50"S AGD66, east to longitude 139°52'30"E AGD66,
north to latitude 27°50'50"S AGD66, east to longitude 139°53'00"E AGD66,
north to latitude 27°50'00"S AGD66, east to longitude 139°53'10"E AGD66,
north to latitude 27°49'30"S AGD66, east to longitude 139°54'30"E AGD66,
south to latitude 27°50'20"S AGD66, east to longitude 139°55'30"E GDA94,
south to latitude 27°54'15"S GDA94, east to longitude 140°01'10"E AGD66,
south to latitude 27°55'00"S Clarke 1858, east to longitude 140°01'35"E GDA94,
south to latitude 28°03'45"S GDA94, east to longitude 140°04'55"E GDA94,
south to latitude 28°06'40"S GDA94, west to longitude 140°04'25"E GDA94,
south to latitude 28°07'25"S GDA94, west to longitude 140°04'00"E Clarke 1858,
north to latitude 28°07'00"S Clarke 1858, west to longitude 140°02'00"E Clarke 1858,
north to latitude 28°06'00"S Clarke 1858, west to longitude 139°54'50"E AGD66,
south to latitude 28°06'30"S AGD66, west to longitude 139°54'25"E AGD66,
south to latitude 28°08'10"S AGD66, west to longitude 139°54'20"E AGD66,
south to latitude 28°08'05"S GDA94, west to longitude 139°53'30"E GDA94,
north to latitude 28°07'05"S GDA94, west to longitude 139°43'15"E GDA94,
north to latitude 27°58'45"S GDA94, east to longitude 139°44'00"E GDA94,
north to latitude 27°56'25"S GDA94, east to longitude 139°44'35"E GDA94,
north to latitude 27°52'15"S GDA94, east to longitude 139°47'00"E GDA94,
north to latitude 27°50'10"S GDA94, east to longitude 139°48'00"E GDA94,
north to latitude 27°47'15"S GDA94, west to longitude 139°47'20"E AGD66,
north to latitude 27°47'00"S AGD66, west to longitude 139°47'10"E AGD66,
north to latitude 27°46'50"S AGD66, west to longitude 139°46'30"E AGD66,
north to latitude 27°46'40"S AGD66, west to longitude 139°46'20"E AGD66,
north to latitude 27°46'30"S AGD66, west to longitude 139°45'40"E AGD66,
south to latitude 27°46'50"S AGD66, west to longitude 139°45'30"E AGD66,
south to latitude 27°47'15"S GDA94, west to longitude 139°45'15"E GDA94,
north to latitude 27°45'00"S Clarke 1858, east to longitude 139°46'00"E GDA94,

north to latitude 27°44'00"S GDA94, east to longitude 139°48'00"E GDA94,
north to latitude 27°43'05"S GDA94, east to longitude 139°48'55"E GDA94,
north to latitude 27°42'30"S GDA94, east to longitude 139°49'55"E GDA94,
north to latitude 27°41'40"S GDA94, east to longitude 139°51'00"E GDA94,
north to latitude 27°40'55"S GDA94, east to longitude 139°52'00"E GDA94,
north to latitude 27°40'00"S GDA94, east to longitude 139°52'55"E GDA94,
north to latitude 27°39'00"S GDA94, east to longitude 139°55'10"E GDA94,
north to latitude 27°38'00"S GDA94, east to longitude 139°56'50"E GDA94,
north to latitude 27°37'10"S GDA94, east to longitude 139°58'10"E GDA94,
north to latitude 27°36'25"S GDA94, east to longitude 139°59'00"E GDA94,
and north to the point of commencement.

Area 2

Commencing at a point being the intersection of latitude 27°47'00"S GDA94
and longitude 139°46'45"E GDA94, thence east to longitude 139°46'50"E GDA94,
south to latitude 27°47'05"S GDA94, east to longitude 139°46'55"E GDA94,
south to latitude 27°47'13"S GDA94, east to longitude 139°47'00"E GDA94,
south to latitude 27°47'15"S GDA94, west to longitude 139°46'35"E GDA94,
north to latitude 27°47'10"S GDA94, east to longitude 139°46'40"E GDA94,
north to latitude 27°47'05"S GDA94, east to longitude 139°46'45"E GDA94,
and north to the point of commencement.

Area 3

Commencing at a point being the intersection of latitude 27°35'55"S GDA94
and longitude 140°06'00"E Clarke 1858, thence east to the southern boundary of the
Innamincka Regional Reserve, then south-easterly along the boundary of the said
Reserve to longitude 140°08'05"E GDA94,
south to latitude 27°39'25"S GDA94, west to longitude 140°06'20"E GDA94,
south to latitude 27°42'50"S GDA94, west to longitude 140°05'25"E GDA94,
south to latitude 27°44'25"S GDA94, west to longitude 140°01'00"E AGD66,
north to latitude 27°43'15"S AGD66, east to longitude 140°03'00"E Clarke 1858,
north to latitude 27°43'00"S Clarke 1858, east to longitude 140°04'00"E Clarke 1858,
north to latitude 27°42'10"S GDA94, west to longitude 140°03'15"E GDA94,
south to latitude 27°42'30"S GDA94, west to longitude 140°01'55"E GDA94,
north to latitude 27°41'00"S GDA94, east to longitude 140°02'40"E GDA94,
north to latitude 27°40'00"S Clarke 1858, east to longitude 140°04'45"E AGD66,
north to latitude 27°39'50"S AGD66, west to longitude 140°04'00"E AGD66,
north to latitude 27°39'05"S AGD66, east to longitude 140°04'08"E AGD66,
north to latitude 27°38'50"S AGD66, east to longitude 140°04'20"E AGD66,
north to latitude 27°38'35"S AGD66, east to longitude 140°05'00"E Clarke 1858,
north to latitude 27°38'00"S Clarke 1858, east to longitude 140°06'00"E Clarke 1858,
and north to the point of commencement.

Area 4

Commencing at a point being the intersection of latitude 27°42'00"S GDA94
and longitude 139°57'00"E GDA94, thence east to longitude 139°58'00"E GDA94,
south to latitude 27°43'20"S AGD66, east to longitude 139°58'30"E AGD66,
south to latitude 27°43'30"S AGD66, east to longitude 139°59'20"E AGD66,
south to latitude 27°43'50"S AGD66, east to longitude 139°59'40"E AGD66,
south to latitude 27°44'25"S GDA94, west to longitude 139°58'30"E GDA94,
south to latitude 27°45'05"S GDA94, west to longitude 139°57'30"E GDA94,
south to latitude 27°45'40"S GDA94, west to longitude 139°56'55"E GDA94,
south to latitude 27°46'00"S AGD66, west to longitude 139°56'30"E AGD66,
south to latitude 27°46'10"S GDA94, west to longitude 139°55'30"E AGD66,
north to latitude 27°46'10"S AGD66, west to longitude 139°54'50"E AGD66,
south to latitude 27°46'20"S AGD66, west to longitude 139°53'50"E AGD66,
north to latitude 27°45'10"S AGD66, east to longitude 139°54'00"E AGD66,
north to latitude 27°45'00"S Clarke 1858, east to longitude 139°54'10"E AGD66,

north to latitude 27°44'40"S AGD66, east to longitude 139°54'20"E AGD66,
north to latitude 27°44'30"S AGD66, east to longitude 139°55'20"E AGD66,
north to latitude 27°44'20"S AGD66, east to longitude 139°55'50"E AGD66,
south to latitude 27°44'30"S AGD66, east to longitude 139°56'10"E AGD66,
north to latitude 27°43'30"S AGD66, east to longitude 139°56'50"E AGD66,
north to latitude 27°43'20"S AGD66, east to longitude 139°57'00"E GDA94,
and north to the point of commencement.

Area 5

Commencing at a point being the intersection of latitude 27°46'15"S GDA94
and longitude 139°55'05"E GDA94, thence east to longitude 139°55'30"E GDA94,
south to latitude 27°47'15"S GDA94, west to longitude 139°55'25"E GDA94,
north to latitude 27°47'10"S GDA94, west to longitude 139°55'20"E GDA94,
south to latitude 27°47'15"S GDA94, west to longitude 139°55'00"E GDA94,
north to latitude 27°47'10"S GDA94, west to longitude 139°54'50"E GDA94,
south to latitude 27°47'15"S GDA94, west to longitude 139°54'45"E GDA94,
south to latitude 27°47'25"S GDA94, west to longitude 139°54'25"E GDA94,
south to latitude 27°47'30"S GDA94, west to longitude 139°54'05"E GDA94,
north to latitude 27°47'25"S GDA94, west to longitude 139°53'55"E GDA94,
north to latitude 27°47'20"S GDA94, west to longitude 139°53'40"E GDA94,
north to latitude 27°47'15"S GDA94, west to longitude 139°53'35"E GDA94,
north to latitude 27°47'05"S GDA94, east to longitude 139°53'40"E GDA94,
north to latitude 27°47'00"S GDA94, east to longitude 139°53'50"E GDA94,
north to latitude 27°46'55"S GDA94, east to longitude 139°54'15"E GDA94,
south to latitude 27°47'00"S GDA94, east to longitude 139°54'25"E GDA94,
south to latitude 27°47'05"S GDA94, east to longitude 139°54'40"E GDA94,
north to latitude 27°47'00"S GDA94, east to longitude 139°54'50"E GDA94,
north to latitude 27°46'55"S GDA94, east to longitude 139°54'55"E GDA94,
north to latitude 27°46'35"S GDA94, east to longitude 139°55'00"E GDA94,
north to latitude 27°46'25"S GDA94, east to longitude 139°55'05"E GDA94,
and north to the point of commencement.

Area 6

Commencing at a point being the intersection of latitude 27°47'45"S GDA94
and longitude 139°55'20"E GDA94, thence east to longitude 139°55'30"E GDA94,
south to latitude 27°48'00"S GDA94, west to longitude 139°55'20"E GDA94,
and north to the point of commencement.

Area 7

Commencing at a point being the intersection of latitude 27°47'40"S AGD66
and longitude 139°53'30"E AGD66, thence east to longitude 139°54'00"E AGD66,
south to latitude 27°47'45"S AGD66, east to longitude 139°54'05"E AGD66,
south to latitude 27°47'50"S AGD66, east to longitude 139°54'10"E AGD66,
south to latitude 27°48'00"S AGD66, east to longitude 139°54'15"E AGD66,
south to latitude 27°48'05"S AGD66, east to longitude 139°54'20"E AGD66,
south to latitude 27°48'50"S AGD66, west to longitude 139°53'50"E AGD66,
north to latitude 27°48'40"S AGD66, west to longitude 139°53'30"E AGD66,
north to latitude 27°48'30"S AGD66, west to longitude 139°53'20"E AGD66,
north to latitude 27°48'25"S AGD66, west to longitude 139°53'10"E AGD66,
north to latitude 27°48'00"S AGD66, east to longitude 139°53'20"E AGD66,
north to latitude 27°47'50"S AGD66, east to longitude 139°53'30"E AGD66,
and north to the point of commencement.

Area 8

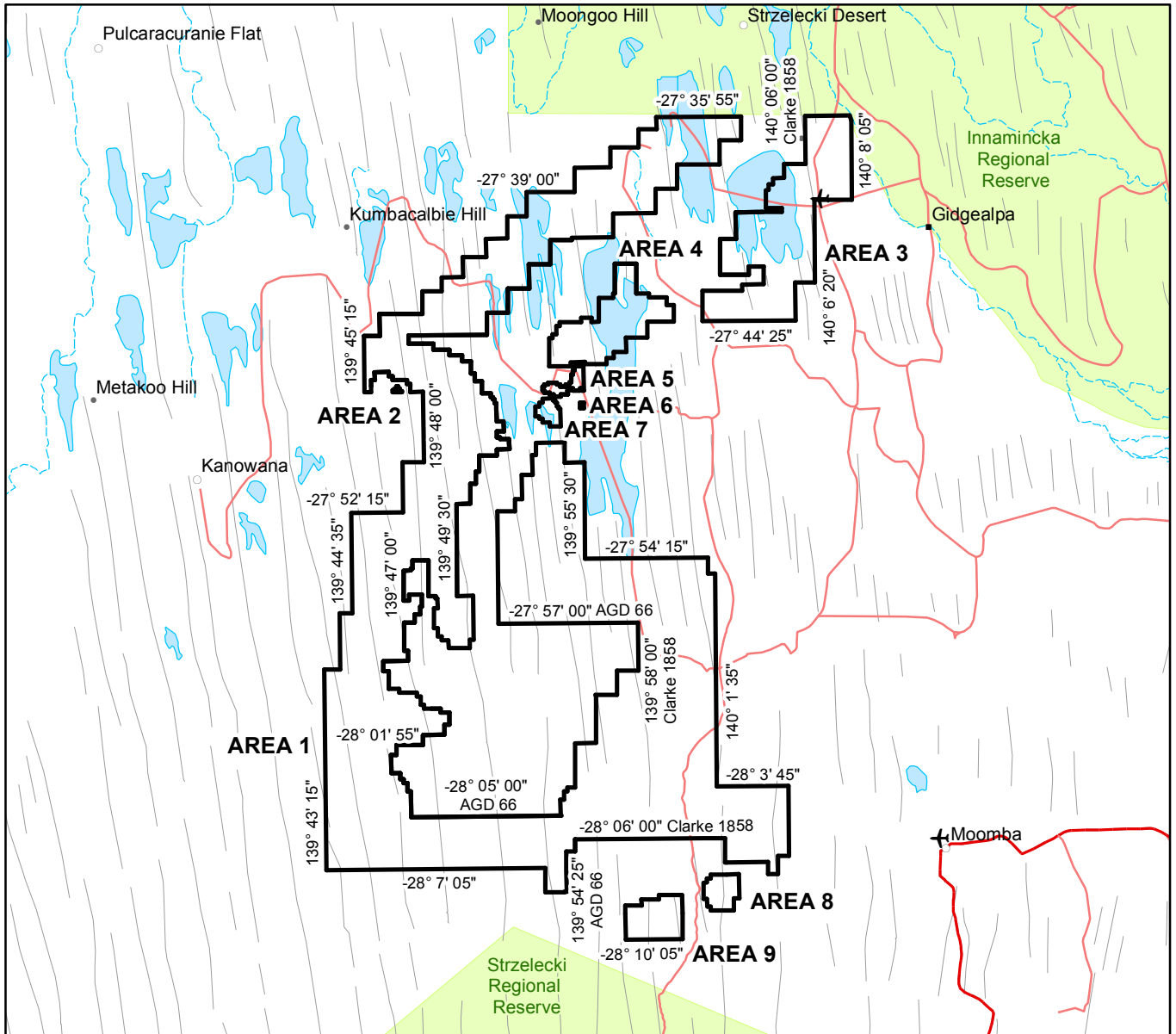
Commencing at a point being the intersection of latitude 28°07'30"S AGD66
and longitude 140°01'10"E AGD66, thence east to longitude 140°02'30"E AGD66,
south to latitude 28°08'25"S GDA94, west to longitude 140°02'20"E GDA94,
south to latitude 28°09'00"S AGD66, west to longitude 140°01'10"E AGD66,

north to latitude 28°08'50"S AGD66, west to longitude 140°01'00"E AGD66,
north to latitude 28°08'30"S AGD66, west to longitude 140°00'50"E AGD66,
north to latitude 28°07'50"S AGD66, east to longitude 140°01'00"E AGD66,
north to latitude 28°07'40"S AGD66, east to longitude 140°01'10"E AGD66,
and north to the point of commencement.

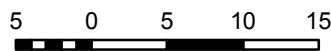
Area 9

Commencing at a point being the intersection of latitude 28°08'20"S AGD66
and longitude 139°58'45"E AGD66, thence east to longitude 139°59'50"E AGD66,
south to latitude 28°10'05"S GDA94, west to longitude 139°57'10"E AGD66,
north to latitude 28°08'40"S GDA94, east to longitude 139°58'00"E GDA94,
north to latitude 28°08'25"S GDA94, east to longitude 139°58'45"E AGD66,
and north to the point of commencement.

AREA: 897 square kilometres approximately



SCALE 1: 500 000



Kilometres

Note: There is no warranty that the boundary of this licence is correct in relation to other features of the map. The boundary is to be ascertained by reference to the Australian Geodetic Datum (AGD66), the Geocentric Datum of Australia (GDA94) and the schedule.

THE PLAN HEREBEFORE REFERRED TO
ASSOCIATED ACTIVITIES LICENCE NO: 191

